

**LEGAL PROCESS FOR ACADEMY
CONVERSION AND
DEVELOPMENT OF MATS**



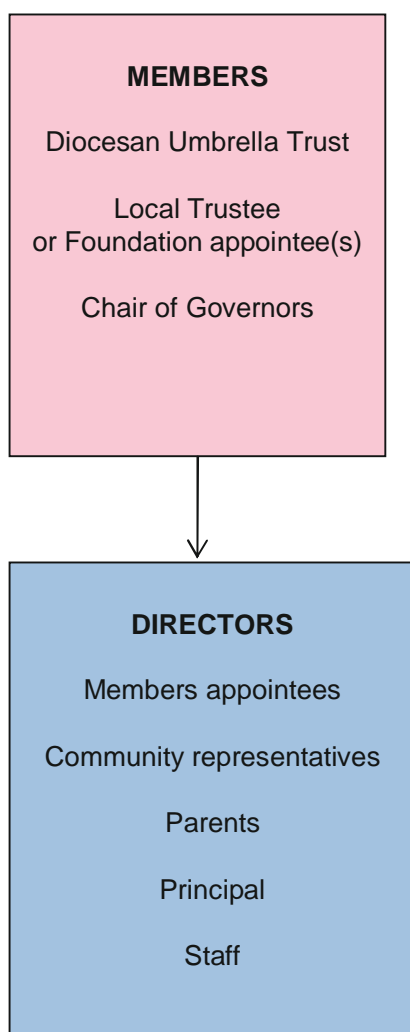
Owen Carew-Jones
Education Partner
Winckworth Sherwood LLP

Diocese of Chichester Legal Process for Academy Conversion

10 Steps to Academy Conversion

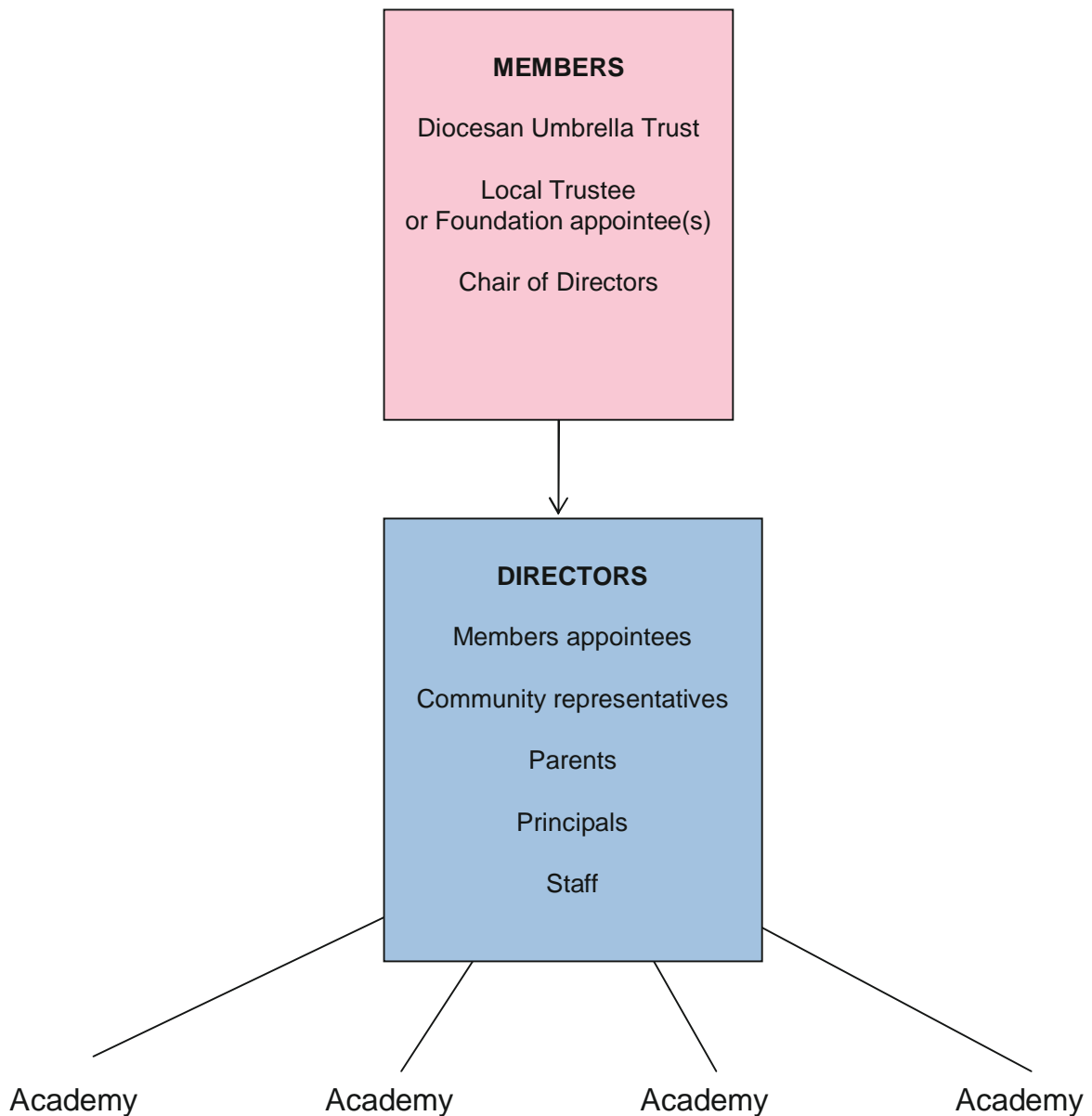
1. Resolution by Governing Body
2. Required Consents and Diocesan approval
3. Application to DfE
4. Consultation under the Transfer of Undertakings
(Protection of Employment) Regulations (TUPE)
5. Consultation with other stakeholders
6. Establishing the Academy Trust
7. Transfer of land – Supplemental Agreement
8. Funding Agreement
9. Commercial Transfer Agreement
10. Notifications and registrations

Diocese of Chichester Stand Alone Church Academy



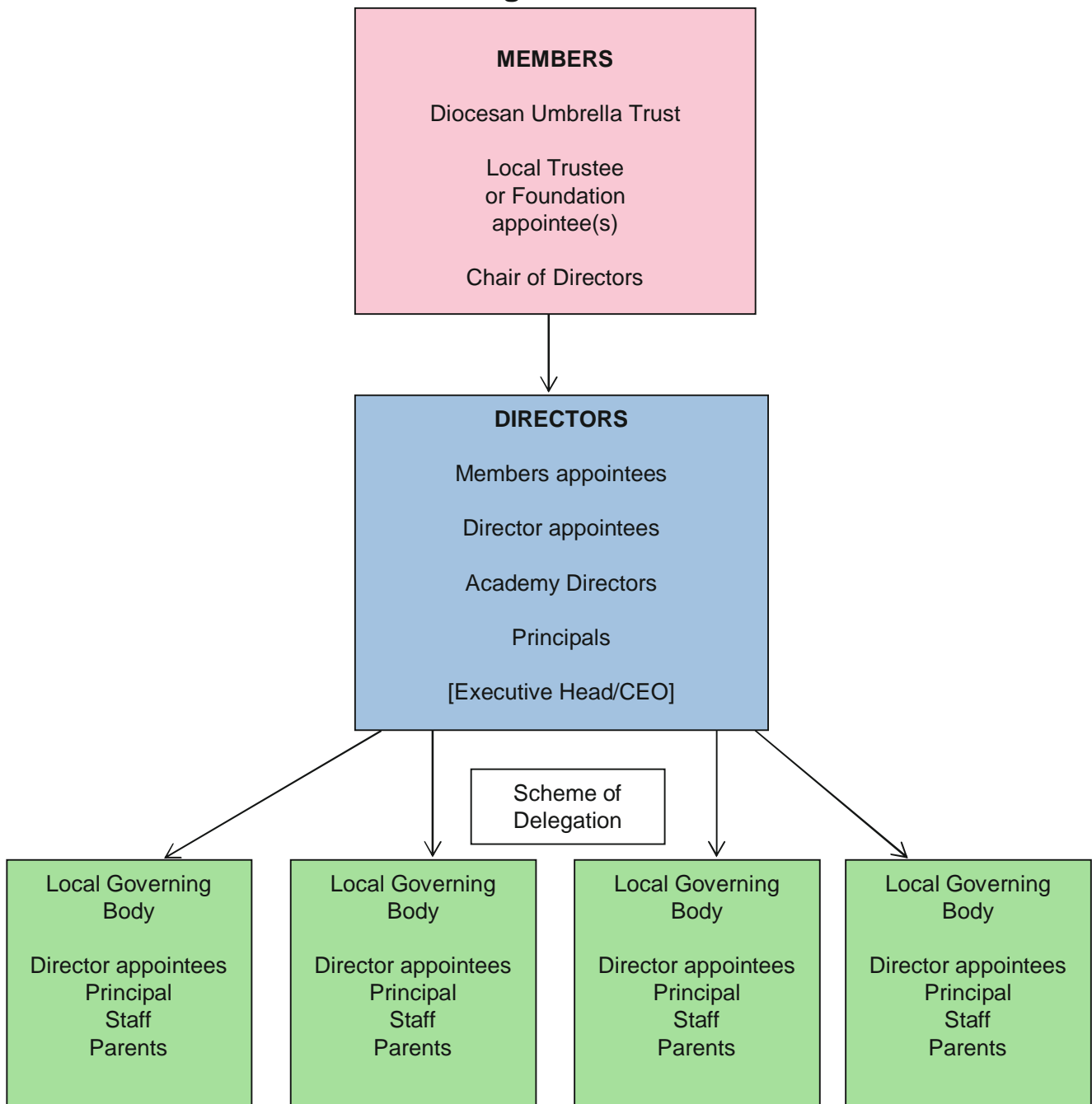
Diocese of Chichester Governance Structure for Church Multi Academy Trust

Basic Model

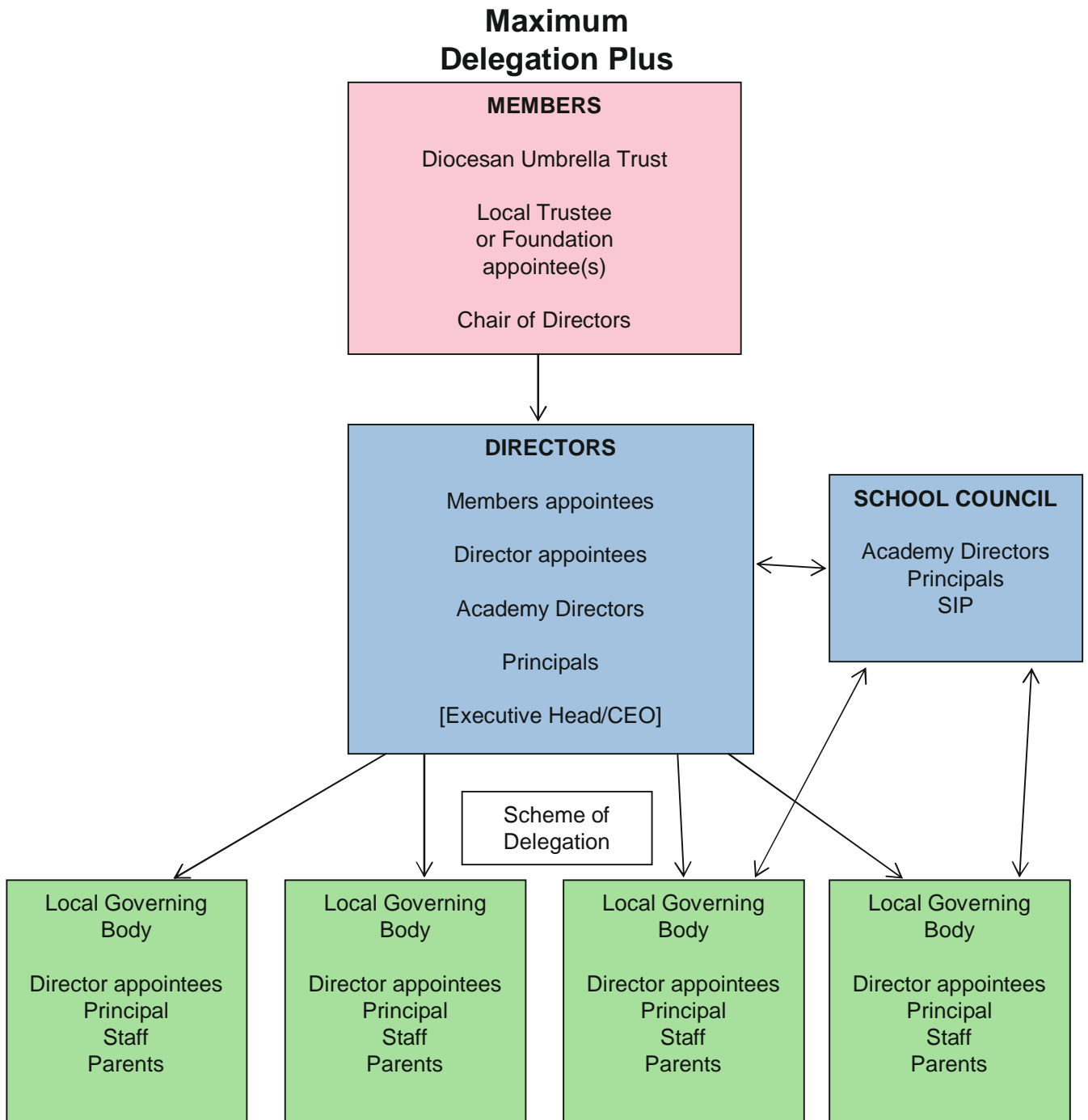


Diocese of Chichester Governance Structure for Church Multi Academy Trust

Maximum Delegation Model



Diocese of Chichester Governance Structure for Church Multi Academy Trust



Diocese of Chichester Governance Structure for Church Multi Academy Trust

Scheme of Delegation for Local Governing Body

- relationship : Strategic Board to LGB
- ethos statement
- composition of LGB
- appointment
- terms of office
- finance issues
- premises
- staffing
- curriculum/standards
- meetings
- indemnity

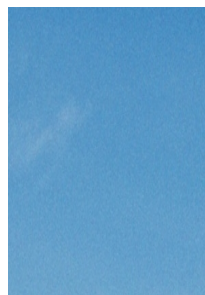
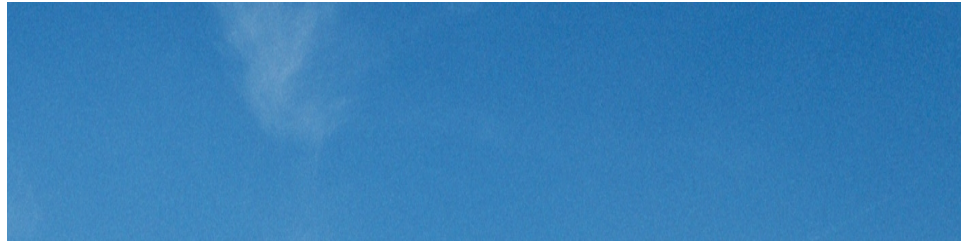
Diocese of Chichester Academy Governance

Core Strategic Functions of Directors:

- ensuring clarity of vision, ethos and strategic direction (upholding objects)
- holding the headteacher (SLT) to account for the educational performance of the School and its pupils
- overseeing the financial performance and controls and making sure money is well spent
- acting as landowner, employer and admissions authority
- meeting compliance requirements

Diocese of Chichester Governance Issues for Church Multi Academy Trust

- shared, unified vision
- “holding to account”
- maximising opportunities
- Balancing collaboration and autonomy



THANK YOU



Reference: OCJ/33827/1